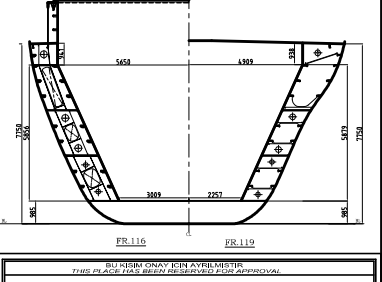
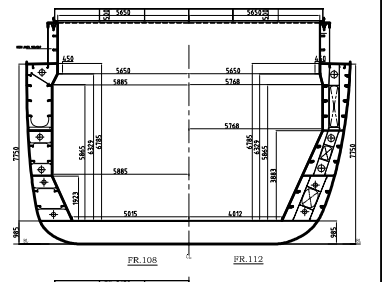
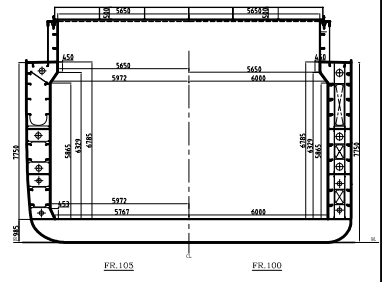
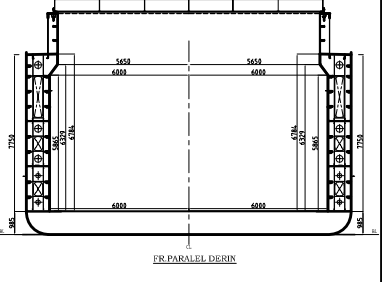
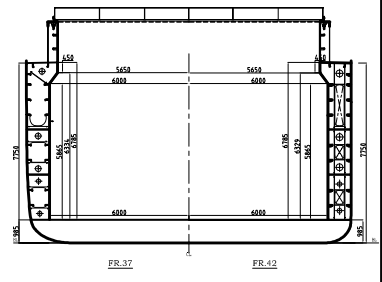
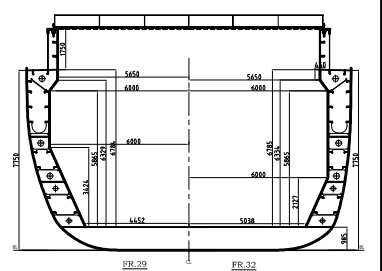
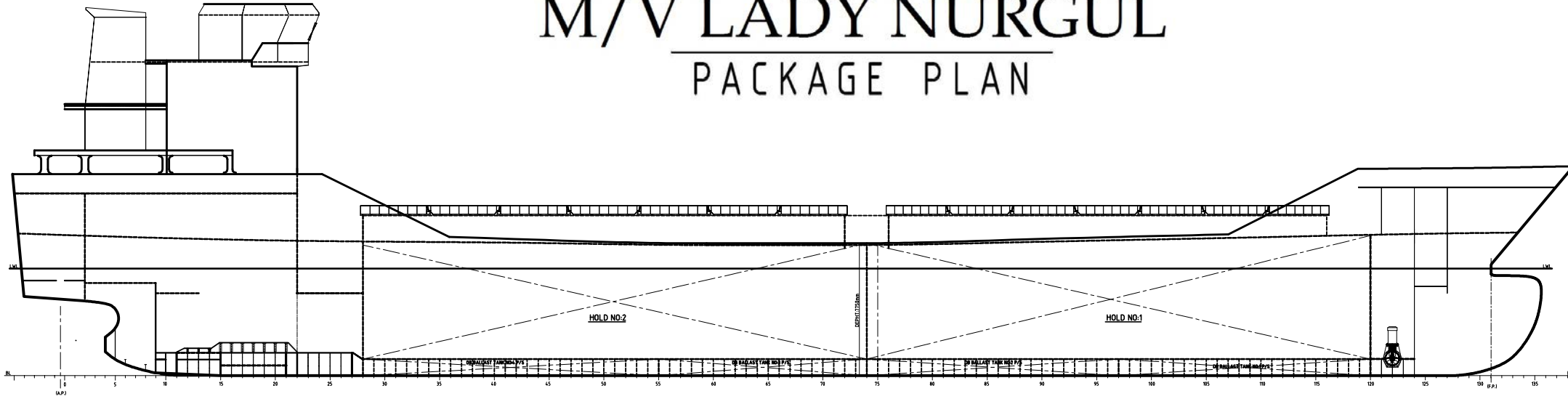


M/V LADY NURGUL

PACKAGE PLAN



PROFILE VIEW

MAIN DIMENSION	
CALL SIGN	TCPC 2
TYPE	GENERAL CARGO
IMO NUMBER	-
YEARS OF BUILT	2006
FLAG	TURKISH
CLASS	BUREAU VERITAS
PORT OF REGISTRY	ISTANBUL
DWT/GRT	4525ton / 2827 GRT 1086 VRT
SUMMER DRAFT	6.350m
LENGTH OVERALL	92.450 m
LENGTH B.P.	84.900 m
BREADTH (Beam@)	12.400 m
DEPTH (Moulded)	7.500 m
HOLD/HATCHES	2 / 2
HOLD DIMENSION NO.1	20.900m(L) 12.400 (B)
HOLD DIMENSION NO.2	20.900m(L) 12.400 (B)
HATCHWAY NO.1	26.000x11.300x1.050m
HATCHWAY NO.2	26.000x11.300x1.050m
HATCH COVERS	MAC GREGOR SINGLE PULL

HOLD	PLACE	GRAIN CAPACITY		LCG	VCG
		m ³	m		
HOLD NO.1	74120	8056.5	2266.33	61.999	4.463
HATCH NO.1	74120	17903.0	506.93	61.900	8.723
TOTAL HOLD NO.1		97959.5	2773.8	61.981	5.246
HOLD NO.2	26274	83772.4	2428.22	32.913	4.616
HATCH NO.2	26274	19693.3	557.62	32.000	8.723
TOTAL HOLD NO.2		104465.7	2985.8	32.743	5.228
TOTAL GRAIN CAPACITY		204385.0	5760.28	46.822	5.236

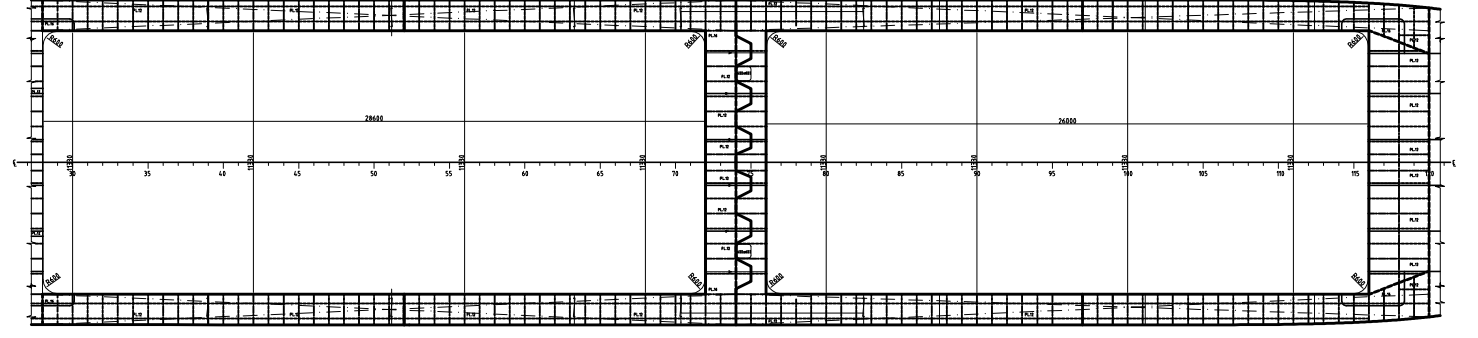
HOLD	PLACE	BALE CAPACITY		LCG	VCG
		m ³	m		
HOLD NO.1	74120	97975.6	2254.40	61.933	4.466
HATCH NO.1	74120	17903.0	506.93	61.900	8.723
TOTAL HOLD NO.1		97661.6	2765.32	61.947	5.246
HOLD NO.2	26274	106811	2974.2	32.900	4.419
HATCH NO.2	26274	16957.2	4763.74	32.753	5.223
TOTAL HOLD NO.2		165755.2	2983.74	32.753	5.223
TOTAL BALE CAPACITY		263416.8	5749.06	46.796	5.234

NO.	BALLAST TANKS	PLACE	VOLUME	WEIGHT	LCG	TCG	VCG	T	γ
1P	DB BALLAST TANK NO.1 P	07-209	82.330	84.809	10.963	-2.699	0.309		
1S	DB BALLAST TANK NO.1 S	07-209	73.340	74.149	68.926	3.072	0.611		
2P	DB BALLAST TANK NO.2 P	54-97	92.179	94.474	10.971	-3.300	0.301		
2S	DB BALLAST TANK NO.2 S	54-97	102.100	104.714	10.971	3.220	0.300		
3P	DB BALLAST TANK NO.3 P	18-74	84.400	85.109	41.425	-2.720	0.300		
3S	DB BALLAST TANK NO.3 S	18-74	76.130	77.033	41.423	3.580	0.301		
4P	DB BALLAST TANK NO.4 P	26-51	109.130	109.730	20.294	-3.486	0.307		
4S	DB BALLAST TANK NO.4 S	26-51	112.030	113.342	20.306	3.386	0.306		
5P	DB BALLAST TANK NO.5 P	07-209	65.330	66.084	70.530	-5.399	2.889		
5S	DB BALLAST TANK NO.5 S	07-209	65.330	66.084	70.530	5.399	2.889		
6P	DB BALLAST TANK NO.6 P	54-97	96.330	97.964	10.971	-4.400	2.915		
6S	DB BALLAST TANK NO.6 S	54-97	96.330	97.964	10.971	4.400	2.915		
7P	DB BALLAST TANK NO.7 P	26-51	46.710	47.278	41.423	-6.500	2.035		
7S	DB BALLAST TANK NO.7 S	26-51	46.710	47.278	41.423	6.500	2.035		
8P	DB BALLAST TANK NO.8 P	26-51	48.480	49.102	20.261	-5.734	2.920		
8S	DB BALLAST TANK NO.8 S	26-51	48.480	49.102	20.261	5.734	2.920		
11S	FRESH TANK S	126-54	22.690	23.227	70.700	3.841	0.300		
11P	FRESH TANK P	126-54	22.690	23.227	70.700	-3.841	0.300		
F.P.	FOREPEAK BALLAST TANK	124-19	153.780	157.623	62.776	0.000	4.459		
TOTAL BALLAST CAPACITY			1396.130	1431.324	52.371	0.000	1.968		

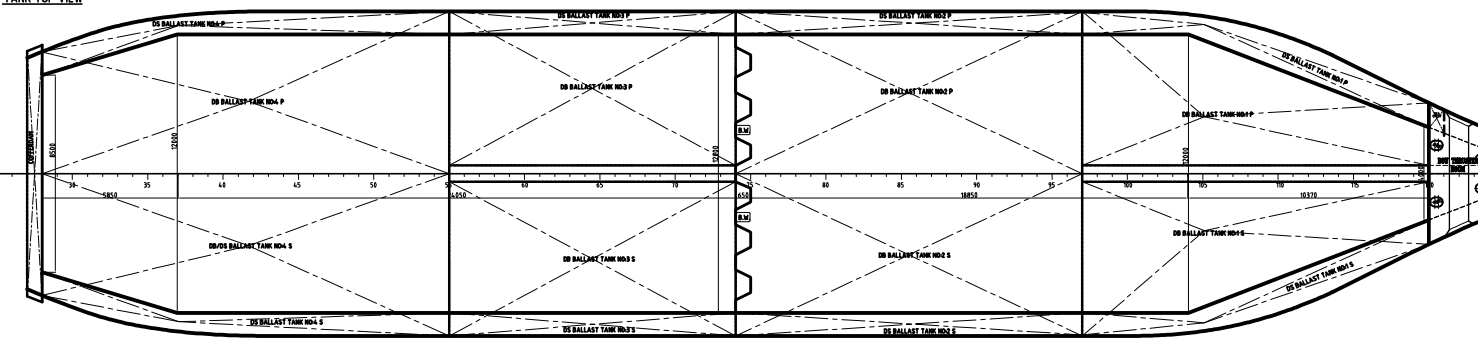
NO.	DIESEL OIL TANKS	PLACE	VOLUME	WEIGHT	LCG	TCG	VCG	T	γ
18	DO STORAGE T.S	2-6	2.238	4.393	4.816	4.074	6.382		
20	DO SERV. T NO.1 S	3-5	3.816	3.200	2.416	3.931	6.527		
19	DO SERV. T NO.2 S	5-7	4.470	3.755	3.616	4.003	6.459		
12S	DB DO STORAGE T.S	26-27	17.410	14.824	15.867	1.807	0.098		
12P	DB DO STORAGE T.P	26-27	14.500	12.180	13.224	-2.166	0.708		
TOTAL DIESEL OIL CAPACITY			45.428	38.833	12.033	1.394	2.493		

NO.	H. FUEL OIL TANKS	PLACE	VOLUME	WEIGHT	LCG	TCG	VCG	T	γ
9S	DO STORAGE TANK S	22-24	71.080	69.376	13.847	4.573	4.612		
9P	DO STORAGE TANK P	26-28	85.020	80.264	15.507	-4.610	4.718		
10	DO SETTLING TANK S	19-22	8.610	4.130	12.223	3.822	6.043		0.943
11	DO SERV. TANK S	19-22	4.300	4.060	13.900	3.206	6.043		
TOTAL H. FUEL OIL CAPACITY			171.610	161.830	15.461	0.001	4.772		

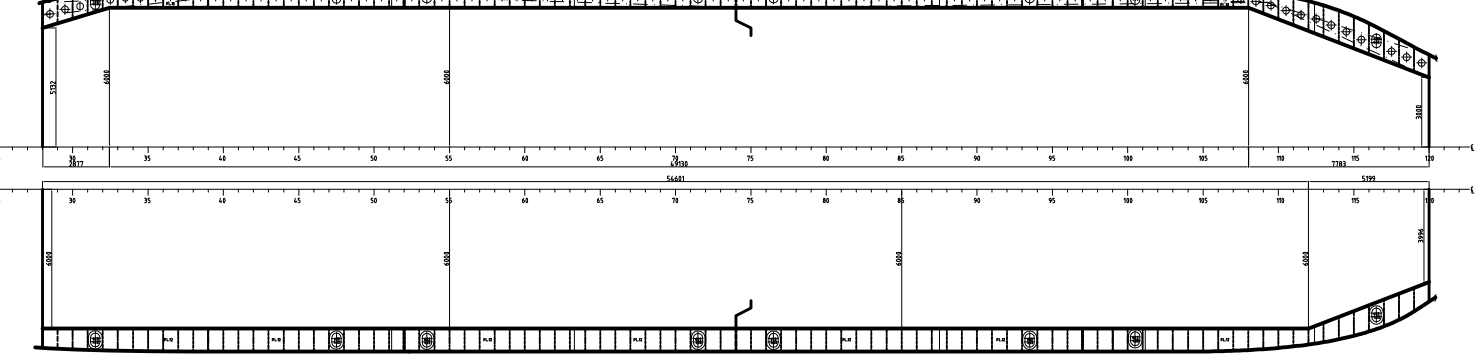
MAIN DECK



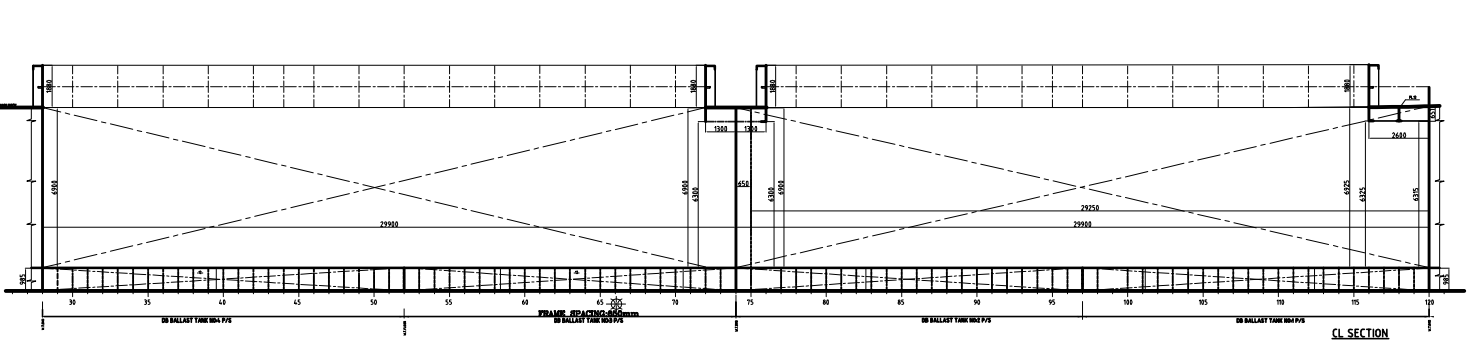
TANK TOP VIEW



STR2935 mm



STR4895mm



M/V LADY NURGUL

PACKAGE PLAN

DESIGNER	SEA-MARINE ARCHITECTURE	DATE	2006.05.01
CLIENT	SEA-MARINE ARCHITECTURE	SCALE	1:1000
CAD	FAHREHAR	PROJECT NO.	001
CONTRACTOR	FAHREHAR	SHIP NO.	001
CLASS	BUREAU VERITAS	CLASS	UNRESTRICTED NAVIGATION

BUREAU VERITAS