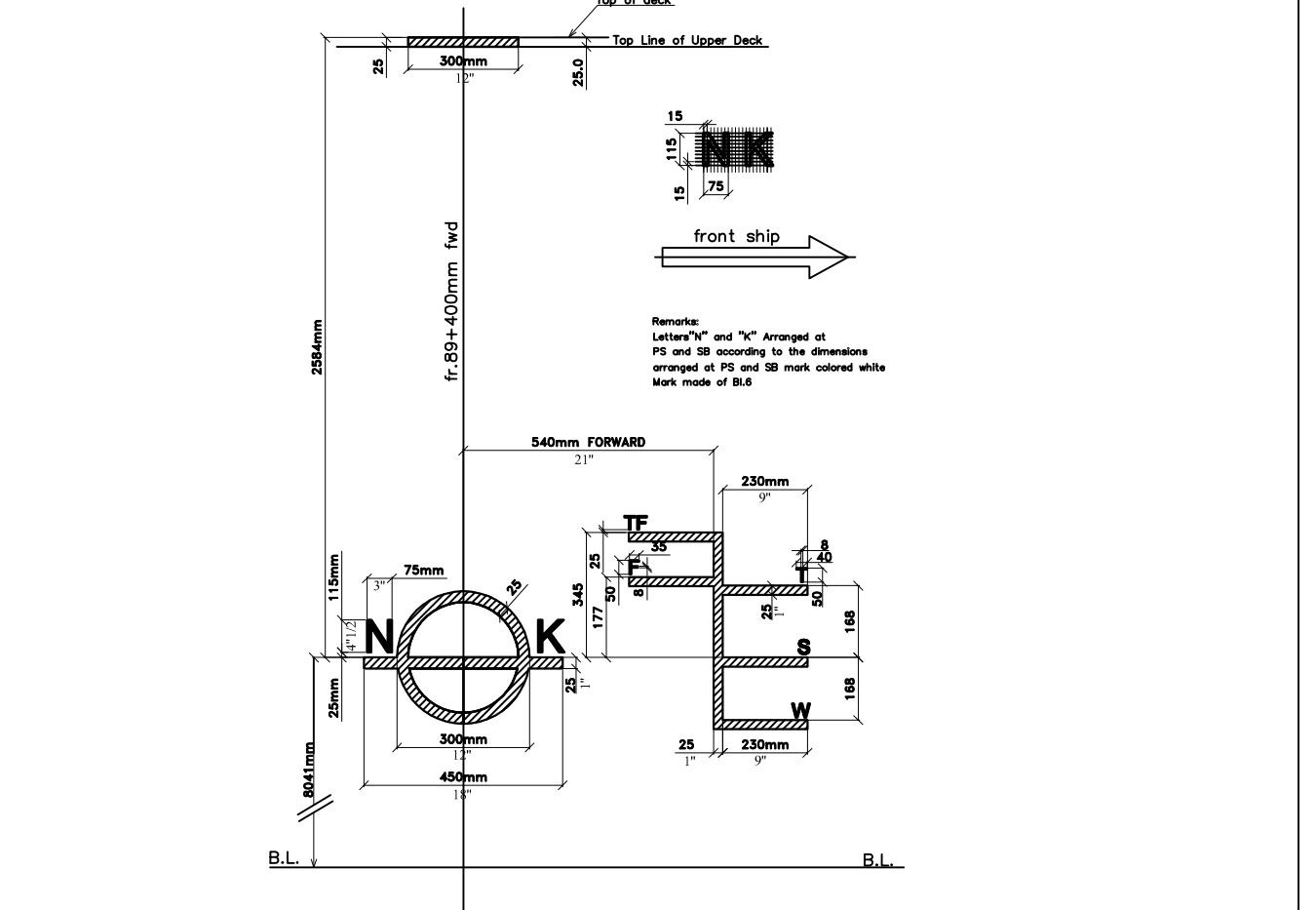
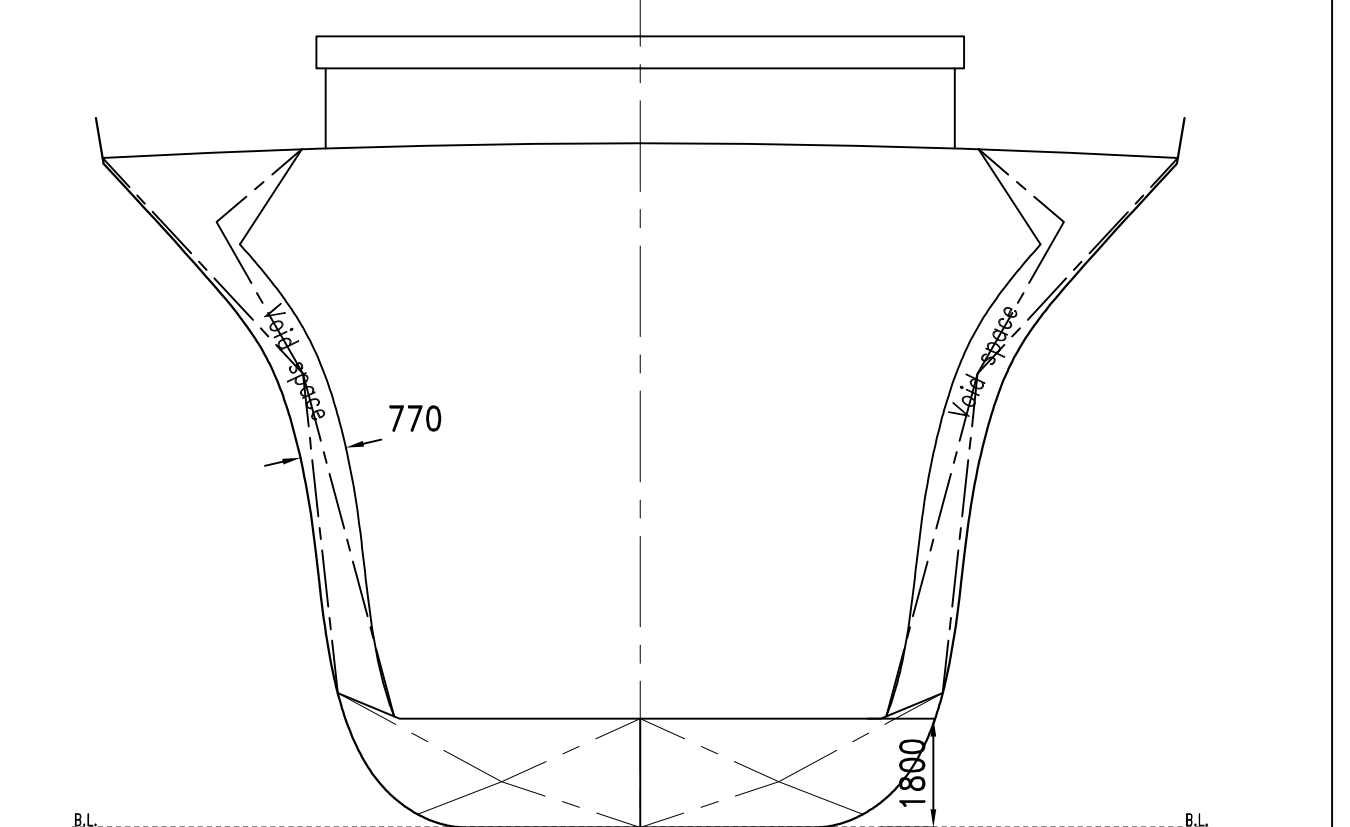


- MAIN ENGINE: MAN 6LS MC 3000W 2100pm
- OPPROPPELLER: ALFA type 18 800/CA 650
- GENERATORS: 2x 2400kW 50Hz MAN generating set YANMAR engine type 5183 DL-ET
- 1x 114kW 50Hz 1500rpm MANBOSCH generating set SCAMBA-VALMATA type 612 03AG
- 1x 30kW 1500rpm MANBOSCH generator set
- 1x 250kW SHAFT alternator
- DECK MACHINERY: Electro hydraulic two combined wireless mooring winch BRATTHAUG type 651 5/6 for 50mm dia 10 grade anchor chain one electric hydraulic capstan BRATTHAUG type MW2 3 tons
- WATCH COVERS: Electro hydraulic lifting type WARNER two 1800x1300 mm one 1200x1040mm and one 1200x1300mm
- STEERING GEAR: Electro hydraulic H&L ALFA type Toleron RA 300-45 Working torque 232 KNm
- COMPRESSORS: 2 Electro compressor sets H&L ALFA type L33 35m<sup>3</sup>/h 30bar
- 1 Electro compressor H&L ALFA type L3 8m<sup>3</sup>/h 30bar
- CRANES: Three electric hydraulic deck cranes H&L ALFA type MTI type QPL 2P 24 ton up to 12m outreach -13 ton up to 20m outreach
- 2 fuel-Oil sep ALFA LAYAL type FDBR 605 1000/h 360 cat.oil cleaning
- 1 fuel-Oil sep ALFA LAYAL type LOER 1000/h 360 cat.oil cleaning
- SEPARATORS: 1 fuel-Oil sep ALFA LAYAL type M&B 10324 600/h cleaning
- ALFA LAYAL DESALT type 20P-20-200 14 m<sup>3</sup>/day
- FRESH WATER GEN.: Alfa LAYAL type 1000 capacity 1/h
- DESA capacity 1.2 l/h 6 bar
- SEAWATER PUMP: SECA 7000/h 18 ton
- STRAW PUMPER: JOMAFOR model TWE
- EXHAUST GAS HEATER: MANBOSCH 4000 P/P
- SEWAGE TREATMENT: MANBOSCH 4000 P/P
- AIR CONDITIONING SYSTEM: MANBOSCH 4000 P/P
- INCUBATOR: MANBOSCH 4000 P/P
- BOW THRUSTER: BERG CPP type SP35-200kW
- RADIO TELEPHONE: GIBER 4330-DEEG 4348
- SATELLITE COMMUNICATION: SATCOM A and SATCOM C DEEG
- WEF: DEEG 4330-DEEG 4348
- DIRECTION FINDER: DEEG 4110
- GPS NAVIGATOR: NAVTECH XL
- GYRO: ANSCHUTZ gyro compass type standard 14
- AUTO PILOT: ANSCHUTZ automatic pilot type multipilot D
- RANGE: JUNGCLAUS type 81 501/standard 224W 90 miles
- NAVTEX RECEIVER: Radio Marine AB PNM 900
- ECHO SOUNDER: Skipper ED 162
- LEE DECK: Two mobile excitors H&L ALFA resinsolvents for 27 persons CEPA A.S.
- FIRE DETECTION AND FIRE EXTINGUISHING: CO system for engine room and cargo holds H&L ALFA
- ALARM SYSTEM: H&L ALFA

Container Capacity	Inner Bottom Load
In Holds: 220 TEUS	Inner Bottom Load: 15.0 t/m <sup>2</sup>
On Deck: 300 TEUS	Container Stack Load
Total: 520 TEUS	20' container stack load: 80 t
	40' container stack load: 100 t



MAIN DIMENSIONS	
Length OA	134.450 m
Length BP	123.200 m
Breadth (Mid)	18.000 m
H (Main Deck)	10.600 m
T (Design)	8.000 m
T (Summer)	8.241 m
Displacement (Summer)	14596.91 tonnes
Displacement (Winter)	3351.85 tonnes
Deadweight (Summer)	11245.06 tonnes
Hold Grain Capacity	14453.27 cubm
Hold Bale Capacity	14192.00 cubm
Flag	MALTESSE
Port of Registry	VALLETTA
Class	N.K.K.
Class No	949115



M/V LADY JASMIN / PUNISOLL MARKING DETAILS	
Length OA	134.450 m
Length BP	123.200 m
Breadth (Mid)	18.000 m
H (Main Deck)	10.600 m
T (Design)	8.000 m
T (Summer)	8.241 m
Displacement (Summer)	14596.91 tonnes
Displacement (Winter)	3351.85 tonnes
Deadweight (Summer)	11245.06 tonnes
Hold Grain Capacity	14453.27 cubm
Hold Bale Capacity	14192.00 cubm
Flag	MALTESSE
Port of Registry	VALLETTA
Class	N.K.K.
Class No	949115

DATE	APPROVED	DATE	APPROVED	DATE	APPROVED
01.06.2014	YILDIZ	01.06.2014	YILDIZ	01.06.2014	YILDIZ
01.06.2014	YILDIZ	01.06.2014	YILDIZ	01.06.2014	YILDIZ

**KUZUY NAVAL ARCHITECTURE**

Kuzey Naval Architecture & Marine Engineering  
 Naval architects, marine engineers, construction  
 Trade Name: M/V LADY JASMIN / PUNISOLL MARKING DETAILS  
 M/V LADY JASMIN / PUNISOLL MARKING DETAILS  
 M/V LADY JASMIN / PUNISOLL MARKING DETAILS

**M/V LADY JASMIN / PUNISOLL MARKING DETAILS**

**HOLD'S DIMENSIONS & PACKAGE PLAN**

SCALE	1:125	OWNER	ING SHIPPING & TRADING LTD.	HULL No	21	M.V.A
DATE	01-03-2014	YARD	SELAM SHIPYARD	Keel Laid	11/Dec/1993	1
Drawing by	Fatih YILMAZ	Proj	01.060	Date of hull	11/Dec/1994	1
Checked by	Fatih YILMAZ	Proj	01.060	DPW	060-008	1

NOTICE: This drawing and the information it contains are the property of KUZUY NAVAL ARCHITECTURE ENGINEERING CO. and may not be reproduced or used in part or in whole for any purpose except in written permission of the company.