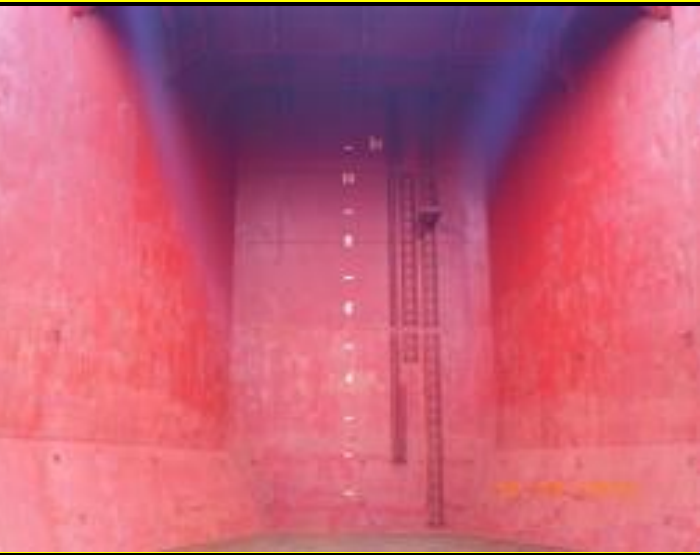


CARGO HOLD CONDITION - PHOTOGRAPHIC REPORT

CARGO HOLD NUMBER : 1



1. Forward Transverse bulkhead



2. Aft Transverse bulkhead



3. Port side plating and tank top



4. Stbd side plating and tank top



5. Tank Top



5. Tank Top Closeup

CARGO HOLD CONDITION - PHOTOGRAPHIC REPORT

CARGO HOLD NUMBER : 2



1. Forward Transverse bulkhead



2. Aft Transverse bulkhead



3. Port side plating and tank top



4. Stbd side plating and tank top



5. Tank Top



5. Tank Top Closeup

CARGO HOLD CONDITION - PHOTOGRAPHIC REPORT

CARGO HOLD NUMBER : 3



1. Forward Transverse bulkhead



2. Aft Transverse bulkhead



3. Port side plating and tank top



4. Stbd side plating and tank top



5. Tank Top



5. Tank Top Closeup

CARGO HOLD CONDITION - PHOTOGRAPHIC REPORT

CARGO HOLD NUMBER : 4



1. Forward Transverse bulkhead



2. Aft Transverse bulkhead



3. Port side plating and tank top



4. Stbd side plating and tank top



5. Tank Top



5. Tank Top Closeup

CARGO HOLD CONDITION - PHOTOGRAPHIC REPORT

CARGO HOLD NUMBER : 5



1. Forward Transverse bulkhead



2. Aft Transverse bulkhead



3. Port side plating and tank top



4. Stbd side plating and tank top



5. Tank Top



5. Tank Top Closeup